


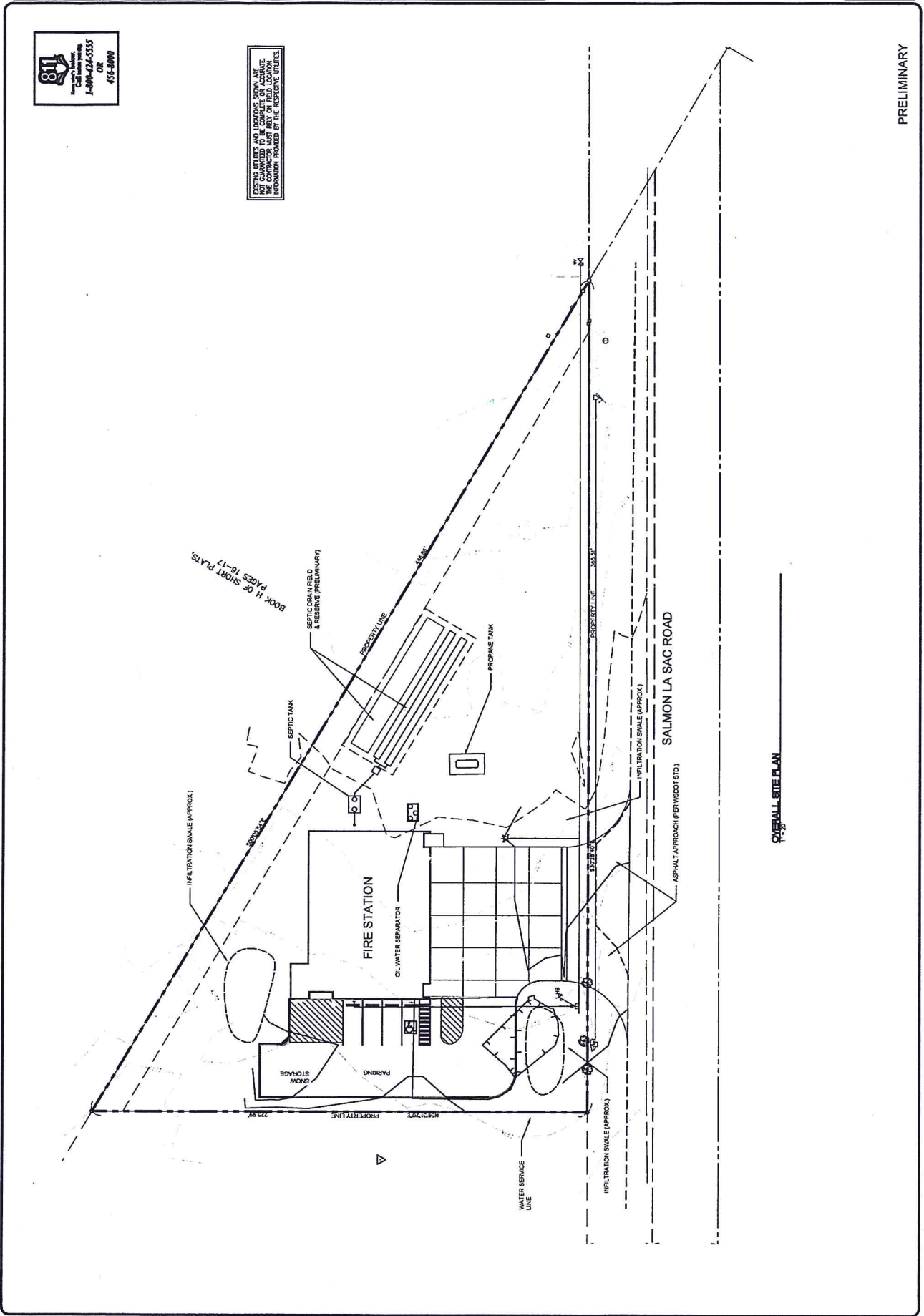
No.	REV.	DATE	DESCRIPTION


WOMER AND ASSOCIATES INC.
 Architecture • Engineering • Planning • Environmental Services
 Suite 600 - 221 N. Wall St., Spokane, Washington 99202
 TEL: (509) 534-4864 FAX: (509) 534-4843 WWW: WWW.WOINC

GRADING PLAN
 KITTITAS FIRE PROTECTION DISTRICT #6
 RONALD, WASHINGTON

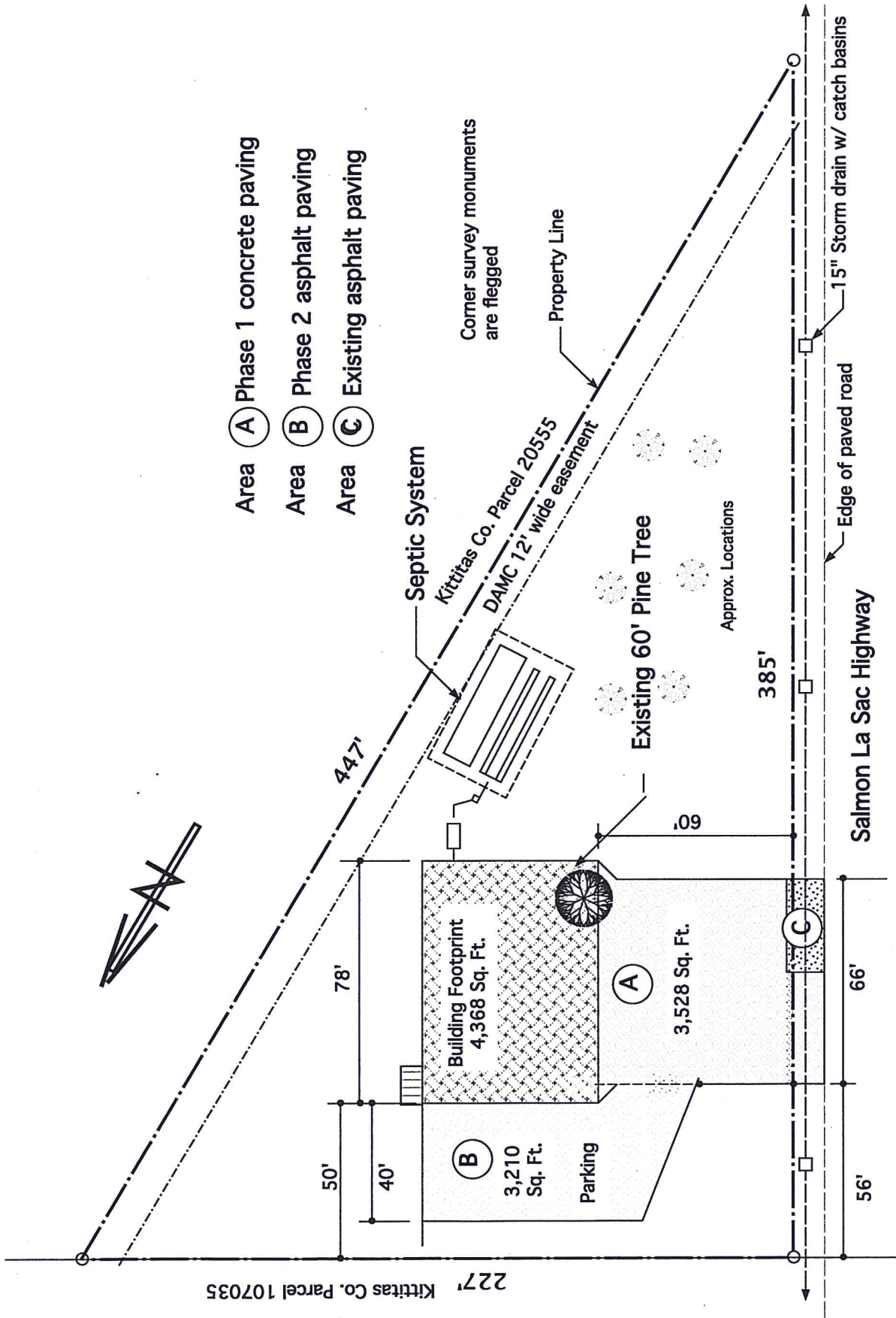
DATE	11/20/22
PROJECT	KITTITAS FIRE PROTECTION DISTRICT #6
SCALE	AS SHOWN
DRAWN BY	WJL
CHECKED BY	WJL
DATE	11/20/22

PRELIMINARY



BOOK H OF SHORT PLANS
 PAGES 16-17

OVERALL SITE PLAN



- Area **A** Phase 1 concrete paving
- Area **B** Phase 2 asphalt paving
- Area **C** Existing asphalt paving

STATION 62R SITE BASIC LAYOUT

Legal Description: Kittitas County Map No. 21-14-34021-0004

RES: 2-11-14

Kittitas Co. Parcel 107035 227'